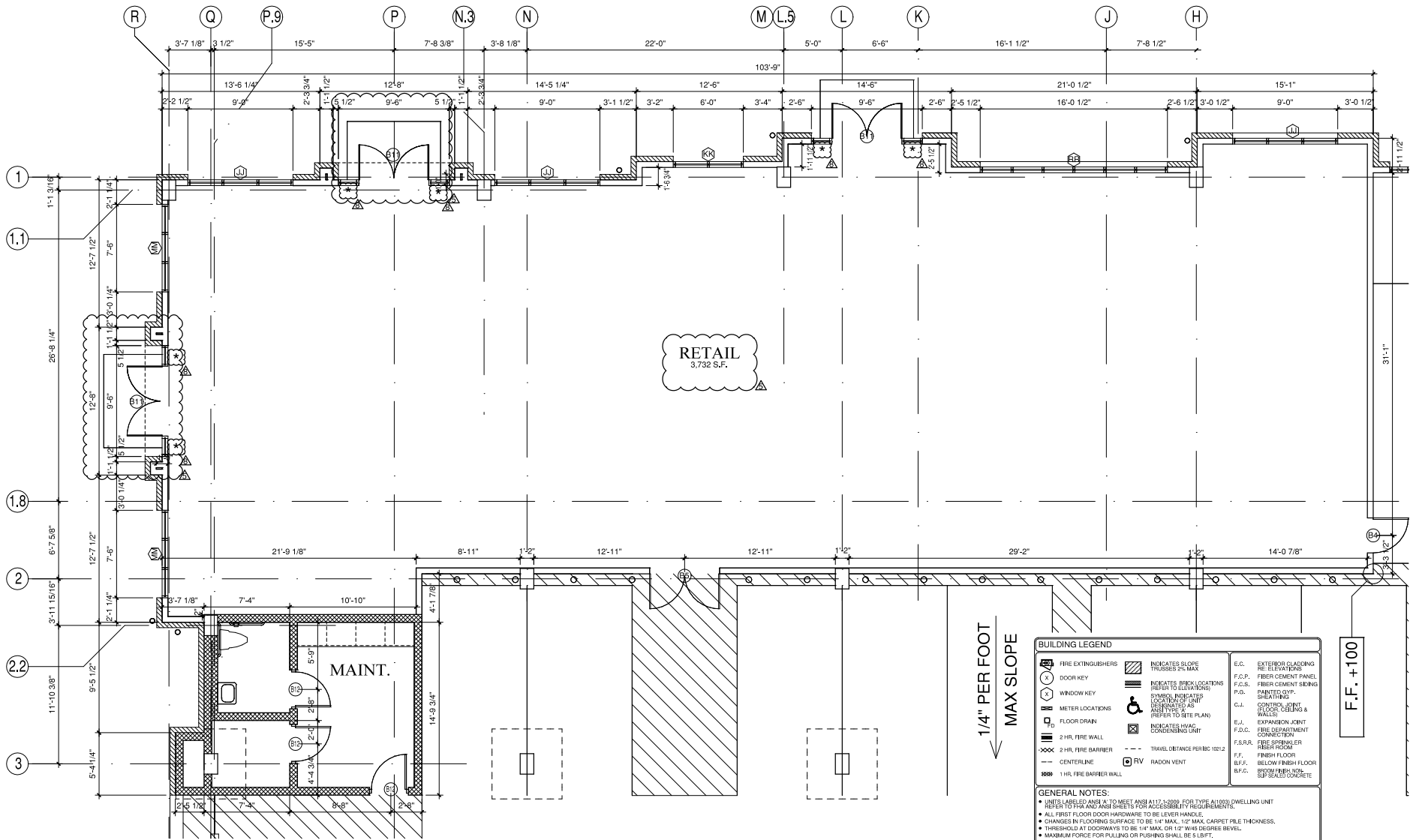


MAIN & MILL RETAIL | 100 E MAIN ST & 151 S MILL ST, LEWISVILLE, TX 75057



BUILDING A

| BUILDING LEGEND | |
|-----------------|---|
| | FIRE EXTINGUISHERS |
| | DOOR KEY |
| | WINDOW KEY |
| | METER LOCATIONS |
| | FLOOR DRAIN |
| | 2 HR. FIRE WALL |
| | 2 HR. FIRE BARRIER |
| | CENTERLINE |
| | 1 HR. FIRE BARRIER WALL |
| | INDICATES SLOPE |
| | INDICATES FINCH LOCATIONS (REFER TO ELEVATIONS) |
| | SYMBOLS INDICATE LOCATION OF UNITS (REFER TO SCHEDULES AND ANS I TYPE A REFER TO SITE PLAN) |
| | INDICATES HVAC CONDENSING UNIT |
| | TRAVEL DISTANCE PERIBC 10212 |
| | RV RADON VENT |
| | EXTERIOR CLADDING (SEE ELEVATIONS) |
| | FIBER CEMENT PANEL |
| | FIBER CEMENT SIDING |
| | PAINTED OVER SHEATHING |
| | CONTROL JOINT (W/LOCK CEILING & WALLS) |
| | EXPANSION JOINT |
| | FIRE DEPARTMENT CONNECTION |
| | FIRE SPURSER |
| | FIBER FLOOR |
| | BELOW FINISH FLOOR (SEE FINISH NOTE) |
| | SUB FLOOR CONCRETE |

GENERAL NOTES:

- UNITS ARE BY ANSI A TO MEET ANSI A117.1-2009, FOR TYPE A1000 DWELLING UNIT. REFER TO FHA AND ANS SHEETS FOR ACCESSIBILITY REQUIREMENTS.
- ALL FIRST FLOOR DOOR-HARDWARE TO BE LEVER HANDLE.
- CHANGES IN FLOORING SURFACE TO BE 1/4" MAX. 1/2" MAX. CARPET PILE THICKNESS.
- THRESHOLD AT DOORWAYS TO BE 1/4" MAX. OR 1/2" W/45 DEGREE BEVEL.
- MAXIMUM FORCE FOR PULLING OR PUSHING SHALL BE 8 LBS/FT.
- ALL CONTROLS AND OPERATING MECHANISMS SHALL BE MOUNTED BETWEEN 15" - 48" FOR A FORWARD OR SIDE APPROACH.
- GENERAL CONTRACTOR TO INSURE CONTROL EXPANSION JOINTS IN ARCHITECTURAL FINISH ARE COORDINATED WITH STRUCTURAL LOCATIONS. REFER TO MANUFACTURER FOR SPECIFIC REQUIREMENTS PERTAINING TO MATERIAL USED.
- METER AND FIBR ARE LOCATED ON A BUILDING-BUILDING BASIS. REFER TO SITE PLAN FOR LOCATIONS.
- BUILDINGS MAY FLIP ABOUT CENTERLINE OR ROTATE. REFER TO SITE PLAN FOR BUILDING LOCATION AND ORIENTATION.
- WALL MOUNTED SERVICE EQUIPMENT AND SERVICE LINES TO BE PAINTED TO MATCH BUILDINGS.
- FIRE EXTINGUISHERS ARE TO BE A MINIMUM 2A 10BC CLASSIFICATION AND SHALL COMPLY WITH NFPA 10 SUBULSIES. REFER TO PLANS FOR LOCATIONS. (REFERENCE DETAILS 19A-10, 20A-10)
- ALL FIRST FLOOR DWELLING UNITS ARE TO MEET FHA AND ANS I' REQUIREMENTS. REFER TO FHA AND ANS SHEETS FOR MORE INFORMATION.
- REFERENCE LANDSCAPE AND M.E.P. FOR HVAC LOCATIONS.

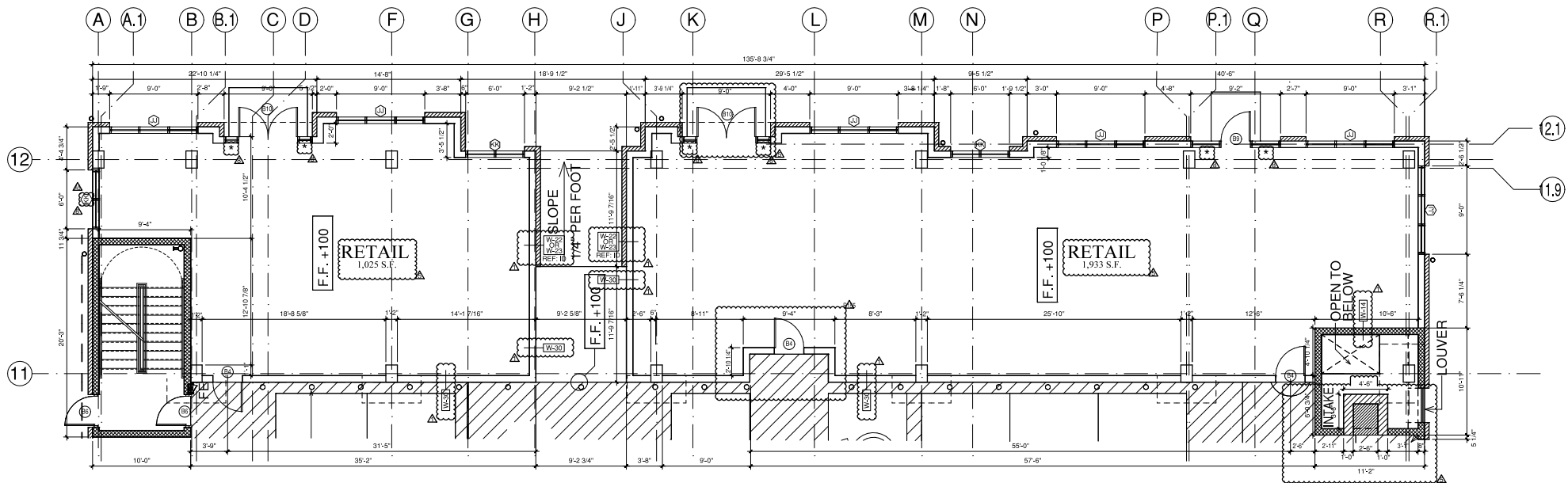
The information was obtained from sources deemed reliable; however, Weitzman has not verified it and makes no guarantees, warranties or representations as to the completeness or accuracy thereof. The presentation of this real estate information is subject to errors; omissions; change of price; prior sale or lease, or withdrawal without notice. You and your advisors should conduct a careful independent investigation of the property to determine if it is suitable for your intended purpose.

MAIN & MILL RETAIL | 100 E MAIN ST & 151 S MILL ST, LEWISVILLE, TX 75057

| BUILDING LEGEND | | | | | |
|-----------------|-------------------------|--|---|----------|--|
| | FIRE EXTINGUISHERS | | INDICATES SLOPE TRUSSES 2% MAX | E.C. | EXTERIOR CLADDING RE ELEVATIONS |
| | DOOR KEY | | INDICATES BRICK LOCATIONS (REFER TO ELEVATIONS) | F.C.P. | FIBER CEMENT PANEL |
| | WINDOW KEY | | INDICATES AREAS DESIGNATED AS ASBESTOS (REFER TO SITE PLAN) | F.C.S. | FIBER CEMENT SIDING |
| | METER LOCATIONS | | INDICATES HVAC CONDENSING UNIT | F.G. | PAINTED GYP. SHEATHING |
| | FLOOR DRAIN | | TRAVEL DISTANCE PER IBC 1021.2 | C.J. | CONTROL JOINT (FLOOR, CEILING & WALLS) |
| | 2 HR. FIRE WALL | | RADON VENT | E.L. | EXPANSION JOINT |
| | 2 HR. FIRE BARRIER | | | F.D.C. | FIRE DEPARTMENT CONNECTION |
| | CENTERLINE | | | F.S.R.R. | FIRE SPRINKLER RISER ROOM |
| | 1 HR. FIRE BARRIER WALL | | | F.F. | FINISH FLOOR |
| | | | | B.F.F. | BELOW FINISH FLOOR |
| | | | | B.F.C. | 8" MIN. FINISH NON-SUP. GRADE CONCRETE |

GENERAL NOTES:

- UNITS LABELED ANSI #1 TO MEET ANSI A117.1-2009 FOR TYPE A(100) DWELLING UNIT REFER TO FHA AND ANSI SHEETS FOR ACCESSIBILITY REQUIREMENTS.
- ALL FIRST FLOOR DOOR HARDWARE TO BE LEVER HANDLE.
- CHANGES IN FLOORING SURFACE TO BE 1/4" MAX. 1/2" MAX. CARPET PILE THICKNESS.
- THRESHOLD AT DOORWAYS TO BE 1/4" MAX. OR 1/2" W/45 DEGREE BEVEL.
- MAXIMUM FORCE FOR PULLING OR PUSHING SHALL BE 5 LB/FT.
- ALL CONTROLS AND OPERATING MECHANISMS SHALL BE MOUNTED BETWEEN 15'-4" FOR A FORWARD OR SEE APPROACH.
- GENERAL CONTRACTOR TO INSURE CONTROL EXPANSION JOINTS IN ARCHITECTURAL FINISH ARE COORDINATED WITH STRUCTURAL LOCATIONS. REFER TO MANUFACTURER FOR SPECIFIC REQUIREMENTS PERTAINING TO MATERIAL USED.
- METER AND FSRR ARE LOCATED ON A BUILDING-BY-BUILDING BASIS. REFERENCE SITE PLAN FOR LOCATIONS.
- BUILDINGS MAY FLIP ABOUT CENTER LINE OR ROTATE. REFER TO SITE PLAN FOR BUILDING LOCATION AND ORIENTATION.
- WALL MOUNTED SERVICE EQUIPMENT AND SERVICE LINES TO BE PAINTED TO MATCH BUILDINGS.
- FIRE EXTINGUISHERS ARE TO BE A MINIMUM 8A 10B.C CLASSIFICATION AND SHALL COMPLY WITH NFPA 10 GUIDELINES. REFER TO PLANS FOR LOCATIONS. (REFERENCE DETAILS 19A7-10, 20A7-10)
- ALL FIRST FLOOR DWELLING UNITS ARE TO MEET FHA AND ANSI 'B' REQUIREMENTS. REFER TO FHA AND ANSI SHEETS FOR MORE INFORMATION.
- REFERENCE LANDSCAPE AND M.E.P. FOR HVAC LOCATIONS.



BUILDING B



The information was obtained from sources deemed reliable; however, Weitzman has not verified it and makes no guarantees, warranties or representations as to the completeness or accuracy thereof. The presentation of this real estate information is subject to errors; omissions; change of price; prior sale or lease, or withdrawal without notice. You and your advisors should conduct a careful independent investigation of the property to determine if it is suitable for your intended purpose.